

Mini Baler

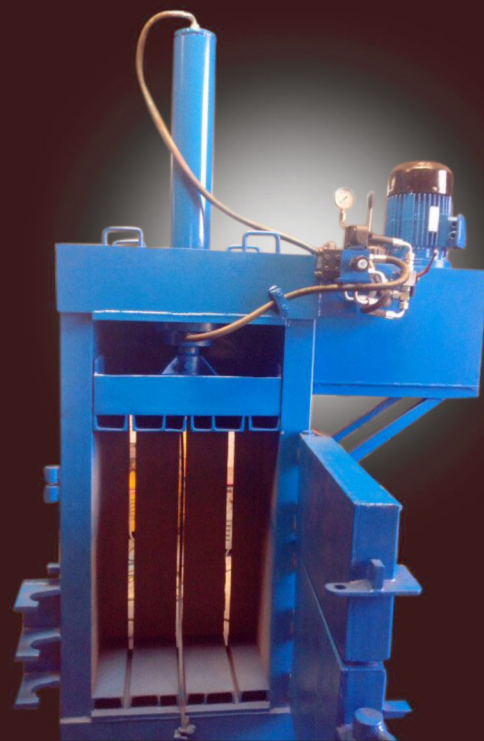
SEW mini balers are designed with small press force of max 20 tons. These balers are oriented to facilities that handle small volume of soft waste including cardboard paper, cans, bottles, rags, film and soft packaging etc. They are ideal options for facilities like malls, retail stores, hotels, vessels, grocery stores, offices, hospitals and even houses.

These mini balers are featured with small footprint and small height. They are good choice for locations with height and space limitations. Bales produced by these balers weight form 20kgs to 100kgs, which is easy to handle even manually.

Baler Applications : paper, cardboard, film, textile, cans, bottles, and any other soft packagings.

FEATURES

- **Chain Bale Ejector**
for easy and efficient bale ejecting with lifting up of the chain
- **Small Footprint and Height**
to suit locations with space and height limitation
- **Liquid Drainage Channel**
for draining residual liquid in the containers out of the baler to keep the recycling area neater and safer
- **Adjustable Bale Height**
for achieving various bale size and weight
- **Electric Controlled**
for easy operation, simply by operating on buttons and switches to fullfil platern moving and bale ejecting.

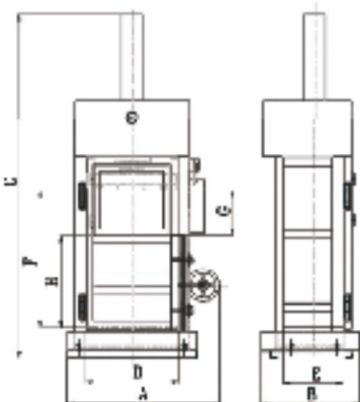


Specifications

MODEL	SEW 1030	SEW 1031	SEW 1032		
Compressing Force (max)	10Ton (22,000lbs)	15TON (33,000lbs)	20TON (44,000lbs)		
Feed Opening	Length	600mm (24")	600mm (24")	800mm (31")	
	Height	400mm(16")	400mm(16")	400mm(16")	400mm(16")
Compressing Chamber Size	Length	600mm (24")	600mm (24")	600mm (24")	800mm (31")
	Width	400mm(16")	400mm(16")	400mm(16")	600mm (24")
Bale Size	Height	900mm(36")	900mm(16")	900mm(16")	1200mm (47")
	Length	600mm (24")	600mm (24")	600mm (24")	800mm (31")
Bale Weight (for OCC)	Width	400mm(16")	400mm(16")	400mm(16")	600mm (24")
	Height	200-500mm (8-20")	200-500mm (8-20")	200-500mm (8-20")	400-800mm (16-31")
Hydraulic Pressure (max.)	Bale Weight (for OCC)	20-40kg	25-50kg	30-60kg	50-100kg
		44-88lbs	55-110lbs	66-132lbs	110-220lbs
Main Cylinder Bore	16Mpa (2320psi)	16Mpa (2320psi)	16Mpa (2320psi)	16Mpa (2320psi)	
Piston Rod	100mm (3.9")	110mm (4.3")	125mm (4.9")	125mm (4.9")	
Stroke	70mm (2.8")	80mm (3.1")	90mm (3.5")	90mm (3.5")	
Oil Reservoir	700mm (28")	700mm (28")	700mm (28")	800mm (31")	
Motor Power	40L (10.6gal)	40L (10.6gal)	40L (10.6gal)	40L (10.6gal)	
Number of Tying	3kw (4Hp)	3kw (4Hp)	4kw (5HP)	4kw (5HP)	
Cycle Time (unloaded)	4	4	4	4	
Machine Weight (approx)	25 seconds	29 seconds	38 seconds	43 seconds	
	600kg (1,320lbs)	700kg (1,540lbs)	850kg (1,870lbs)	1000kg (2,200lbs)	

Overall specifications are subject to change without notice. SEW sales representative for your inquiry will give you the exact specifications for your quoted machine.
 * Bale size hereby referred to does not consider bale expanding.
 ** Throughput rates are subject to your material's input density, feed speed, and other variables of production outside the control of SEW.

Dimensional Data



MODEL	SEW 1027	SEW 1028	SEW 1029	
A	1000mm/ 39"	1000mm / 39"	1000mm /39"	1200mm / 47"
B	650mm/ 26"	650mm / 26"	650mm/26"	850mm / 33"
C	2265mm/ 89"	2265mm / 89"	2300mm/91"	2700mm / 106"
D	600mm/ 24"	600mm / 24"	600mm/24"	800mm / 31"
E	400mm/ 16"	400mm / 16"	400mm/16"	600mm / 24"
F	900mm/ 35"	900mm / 35"	900mm/35"	1200mm / 47"
G	400mm/ 16"	400mm / 16"	400mm/16"	400mm / 16"
H	500mm/ 20"	500mm / 20"	500mm/20"	800mm / 31"

